

# Insertion of Tibial Extension Implant during Total Knee Arthroplasty

ICD-10 Coordination and Maintenance Committee Meeting  
March 7, 2023



**ZIMMER BIOMET**  
Moving You Forward.™

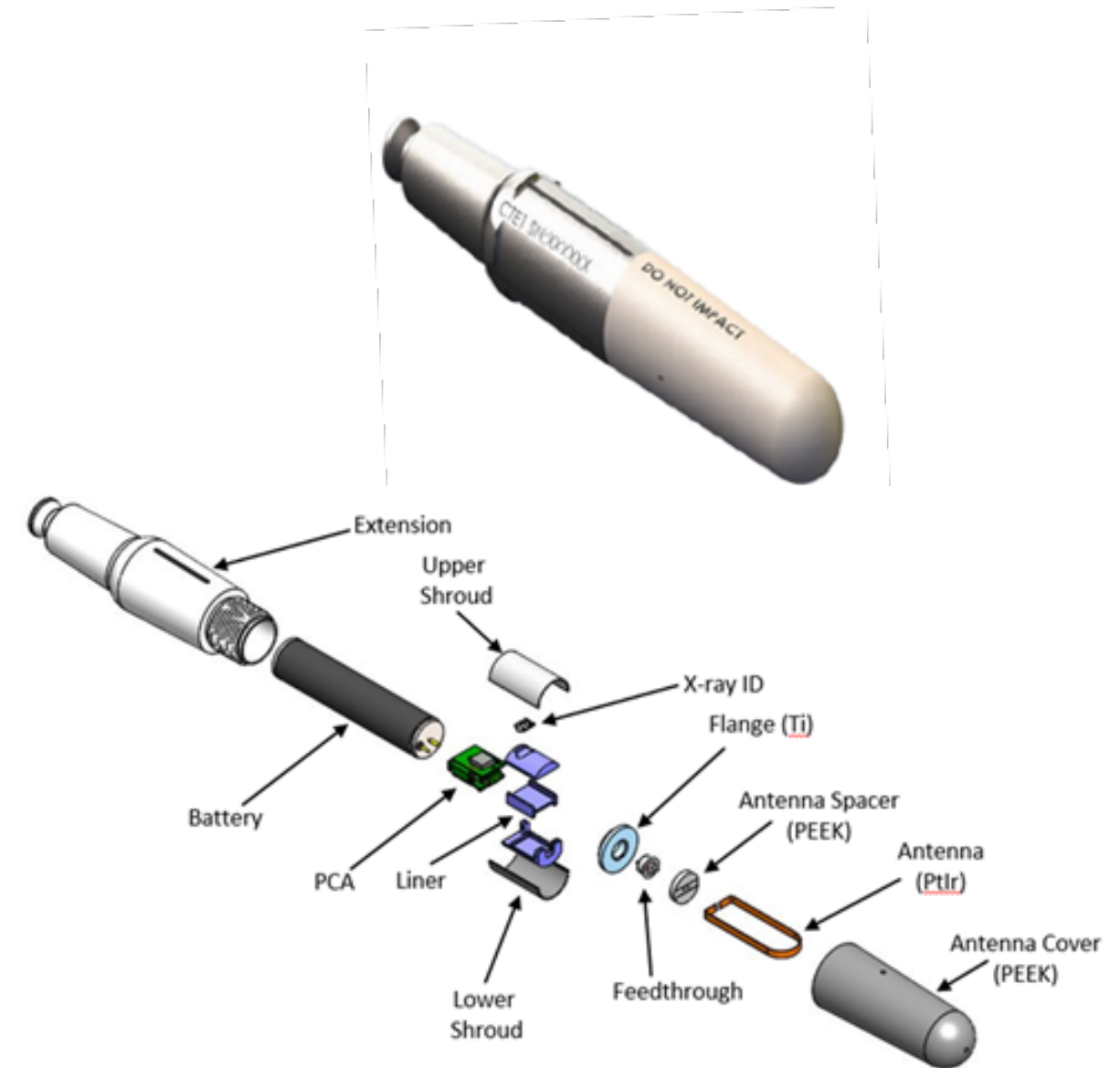
# Total Knee Arthroplasty (TKA)



- Patients who have tried other treatments but continue to suffer from painful osteoarthritis or damaged knee joints are eligible for a total knee arthroplasty
- Zimmer Biomet's Persona IQ® - The Smart Knee® is comprised of two components:
  - Persona® Knee Implant
  - Canturio™ te tibial extension

# Canturio™ te Tibial Extension with Embedded Electronics and Motion Sensors

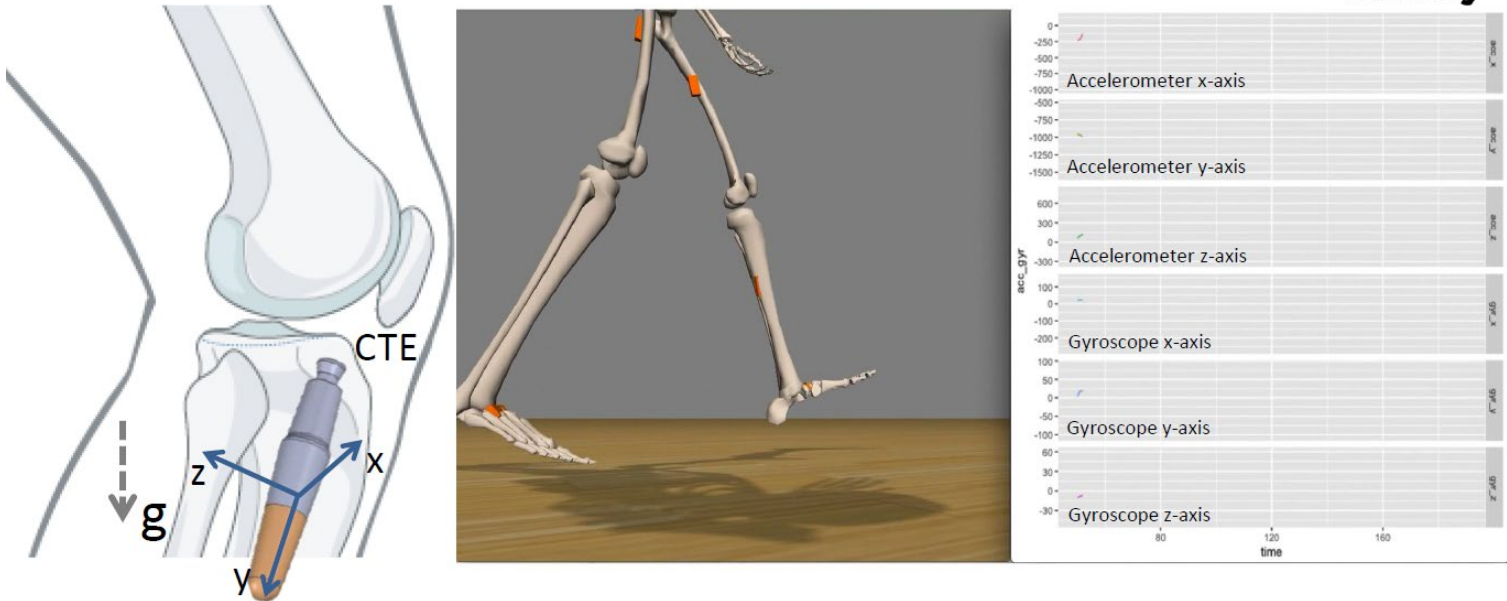
- The Canturio™ te tibial extension is implanted to increase the stability of the tibial plate
- Canturio™ te's embedded highly accurate sensors precisely measure the knee's motion, allowing the surgeon to monitor how a patient's mobility is changing
  - Counts patient steps
  - Measures range of motion and stride length
  - Tracks walking speed
  - Monitors gait quality



# Secure Data Flow



Beyond Step Counts: Gait Measurement and Analytics



# What are Recovery Curves?

Recovery Curves enable you to view how a patient's gait parameter data compares to patients like them. Recovery Curves are overlays of cohort recovery trends for the 5<sup>th</sup>, 10<sup>th</sup>, 25<sup>th</sup>, 50<sup>th</sup>, 75<sup>th</sup>, 90<sup>th</sup> and 95<sup>th</sup> percentile to benchmark the patient's individual progress.

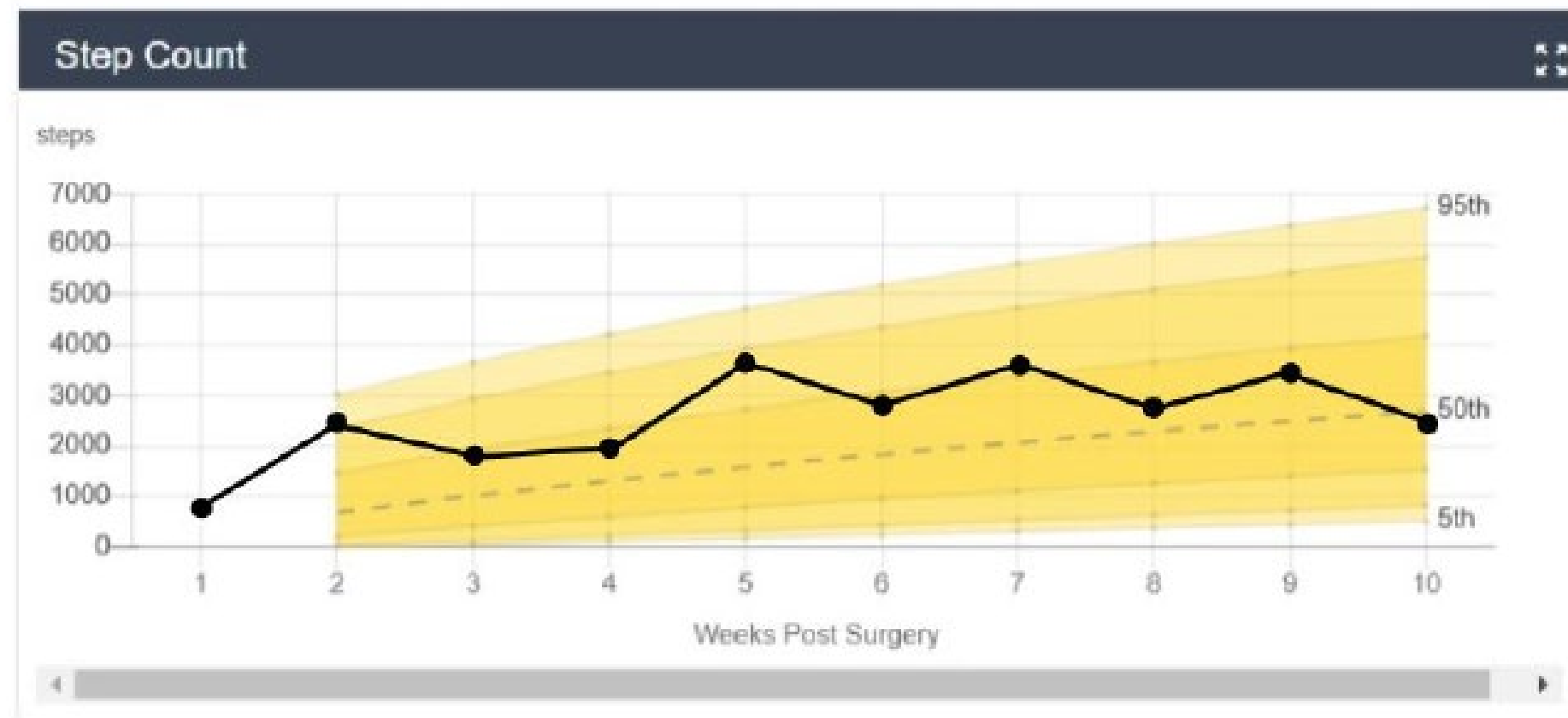
Recovery Curves support a deeper and broader analysis of a patient's recovery when comparing a patient's gait parameters to the gait parameters of the total canturio™ te tibial extension (CTE) population or specific cohorts based on gender and age.



# Recovery Curves

Recovery Curves are available for the following gait parameters:

- Walking speed
- Functional range of motion
- Step count
- Stride length
- Tibia range of motion
- Distance
- Cadence



# Medical Record Documentation

- Documentation of TKA with tibial extension will be included in the operative report
- Typical terms used for Persona IQ®:
  - Canary
  - CHIRP™
  - Canary Tibial Extension
  - CTE
  - Smart Tibial extension



# Regulatory Status

- The Canturio™ te tibial extension (CTE) with Canary Health Implanted Reporting Processor (CHIRP™) System received 510(k) DeNovo clearance (DEN200064) from the FDA on August 27, 2021
  - Issued under the generic name “implantable post-surgical kinematic measurement knee device”
- Breakthrough Device Designation (Q181538) was granted from the FDA on October 24, 2019
- The CTE with CHIRP™ is the subject of a FY 2024 New Technology Add-On Payment (NTAP) application



THANK YOU!

